



DENNIS G. MCFAR, LS 4751
LICENSE EXPIRES: 9/30/11

DATE

ANDREGG GEOMATICS

SURVEYORS STATEMENT
I CERTIFY THAT I SUPERVISED THE SURVEY OF THE PROJECT LANDS THAT THE PROJECT BOUNDARY DELINEATION FOR THE MIDDLE FORK AMERICAN RIVER PROJECT AS SHOWN ON THIS EXHIBIT "G" IS DEVELOPED WITHIN REASONABLE ACCURACIES AS REQUIRED IN 18CFR4.39 & 18CFR4.41 TO THE GEOGRAPHIC LOCATION. THIS EXHIBIT IS BASED UPON MAPS OF THE EXHIBIT "K", SHEET 23 OF THE MIDDLE FORK AMERICAN RIVER PROJECT NO.2079 AND BOOK 2 SURVEY OF 2007, AND RECORDS OF THE PLACER COUNTY AND CORRECTED SHOWN HEREON. SEE CONTROL SCHEME FOR DETAILS OF THE BOUNDARY DELINEATION AND DATA ACQUISITION.

REFERENCE POINT COORDINATES
NAD83 CALIFORNIA STATE PLANE COORDINATE SYSTEM ZONE II (CCS93, ZONE 2);
U.S. SURVEY FEET

NOTES
SHADE TOPOGRAPHY SHOWN HEREON PER EXHIBIT "K", SHEET 23, MIDDLE FORK AMERICAN RIVER PROJECT; RALSTON AFTERBAY PROJECT AREA, REVISED OCT. 20, 1977
ALL FACILITIES AND FEATURES SHOWN HERE ON ARE PER DATA COLLECTED BY OTHERS

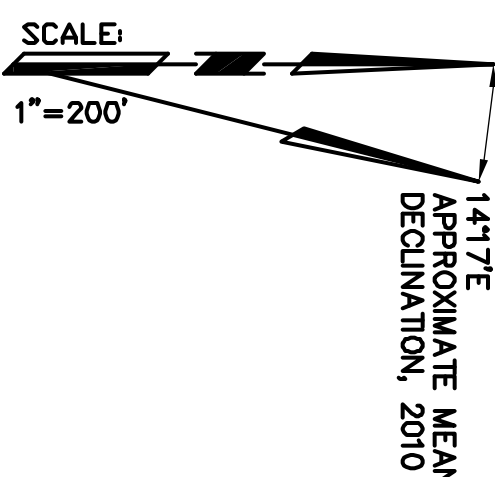
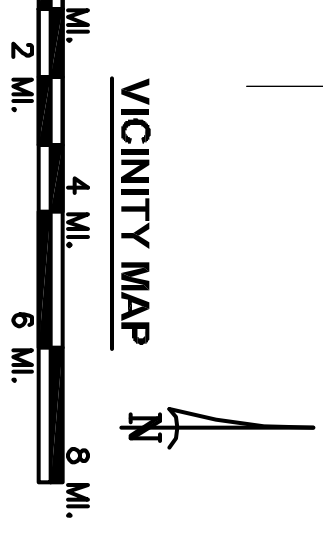


EXHIBIT 'G' PROJECT 2079
MIDDLE FORK AMERICAN RIVER PROJECT
RALSTON AFTERBAY PROJECT AREA
A PORTION OF SECTIONS 2, 3 & 4, T.13 N., R.11 E., M.D.M.
PLACER COUNTY, CALIFORNIA
SCALE: 1"=200' FEBRUARY 11, 2011
ANDREGG
GEOMATICS



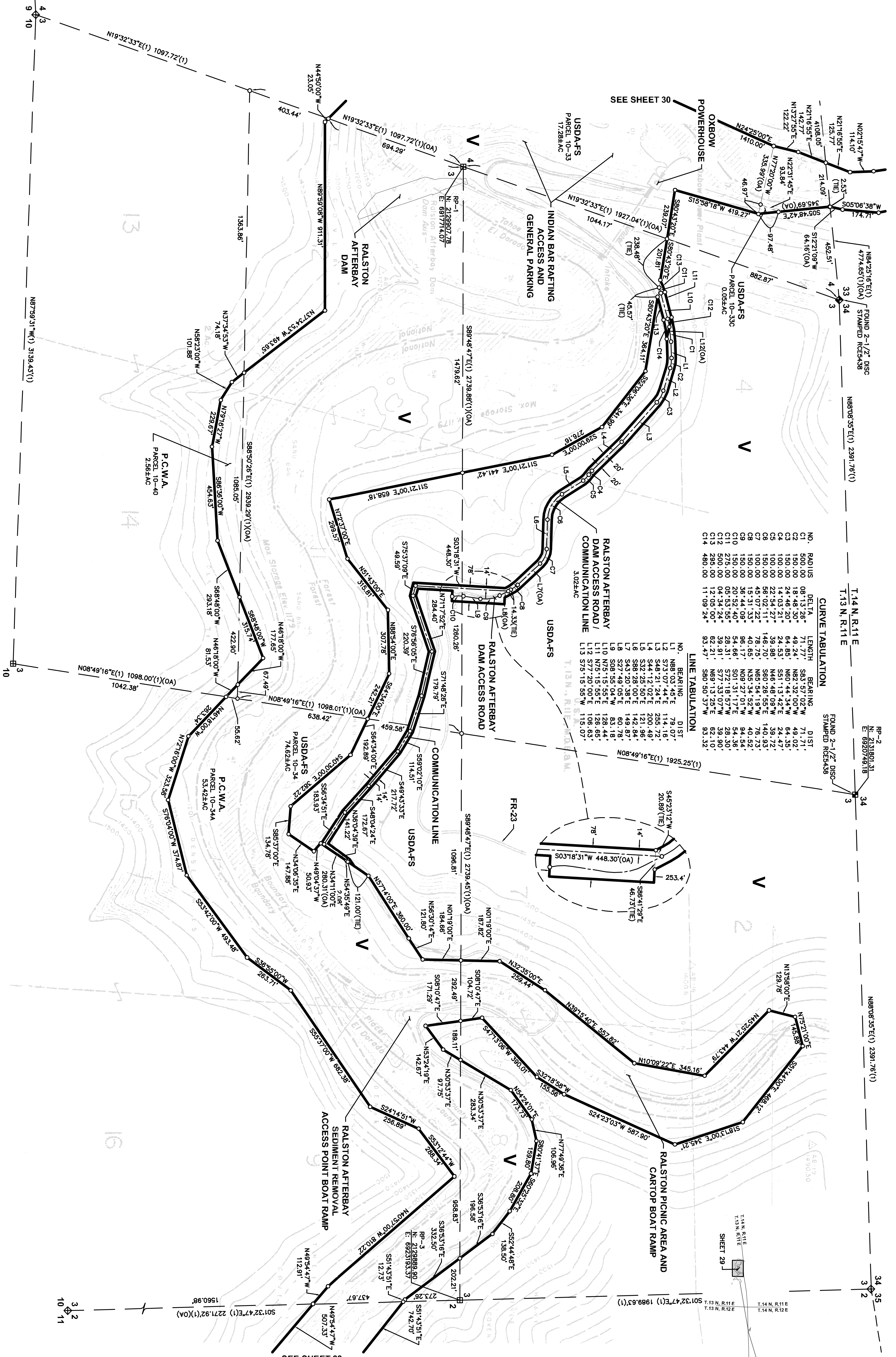
SHEET 29 OF 33

- LEGEND**
- PROJECT BOUNDARY
 - RESERVOIR STORAGE STAGE
 - TUNNEL (WITH SHAFT)
 - SECTION LINE, ESTABLISHED
 - SECTION LINE, PROTRACTED
 - SUBDIVISION LINE, GOVERNMENT LAND SURVEY
 - SECTION CORNER, FOUND
 - 1/4 CORNER, FOUND
 - 1/4 CORNER, RECORD
 - COUNTY LINE
 - U.S. FOREST BOUNDARY
 - OVERALL DIMENSION
 - REFERENCE POINT
 - PUBLIC LAND
 - ROAD
 - BRIDGE
 - RIVER OR PERENNIAL STREAM
 - INTERMITTENT STREAM
 - SPRING
 - POND OR LAKE, WATER LEVEL, JULY 1961
 - TREES OR BRUSH
 - STREAM FLOW GAGING STATION
 - WATER SURFACE GAGING STATION
 - CAMPGROUND
 - BUILDING
 - GOVERNMENT BENCH MARK
 - BENCH MARK RELOCATION
 - PHOTOGRAHMETRIC PRINCIPAL POINT
 - TRIANGULATION STATION
 - FIELD ESTABLISHED ELEVATION
 - PHOTOGRAMMETRIC ELEVATION
 - MINERAL RIGHTS ONLY
 - RECORD PER 2 ROS 78



CURVE TABULATION			
NO.	RADIUS	DELTA	LENGTH
C1	500.00	08°13'20"	71.71
C2	500.00	18°44'30"	142.77
C3	150.00	24°46'20"	64.85
C4	100.00	14°03'21"	24.53
C5	100.00	22°54'27"	39.98
C6	150.00	58°02'11"	146.70
C7	100.00	45°07'22"	78.75
C8	150.00	45°31'09"	66.65
C9	150.00	38°41'09"	54.66
C10	150.00	20°52'40"	28.31
C11	275.00	05°53'56"	39.91
C12	500.00	04°34'24"	57.73
C13	295.00	12°05'00"	82.21
C14	480.00	11°09'24"	93.47

LINE TABULATION			
NO.	BEARING	LENGTH	DIST.
L1	N88°03'44"E	79.07	79.07
L2	S73°07'44"E	114.16	114.16
L3	S48°21'24"E	255.72	255.72
L4	S44°12'02"E	200.49	200.49
L5	S32°25'50"E	121.96	121.96
L6	S38°28'00"E	142.84	142.84
L7	S27°40'58"E	80.97	80.97
L8	S08°55'04"W	83.18	83.18
L9	S08°15'55"E	128.44	128.44
L10	N75°15'55"E	108.63	108.63
L11	S77°20'00"E	115.07	115.07
L12	S75°15'55"W	115.07	115.07



NO. RAD. US DELTA LENGTH BEARING DIST.
C1 500.00 08°13'20" 71.71
C2 500.00 18°44'30" 142.77
C3 150.00 24°46'20" 64.85
C4 100.00 14°03'21" 24.53
C5 100.00 22°54'27" 39.98
C6 150.00 58°02'11" 146.70
C7 100.00 45°07'22" 78.75
C8 150.00 45°31'09" 66.65
C9 150.00 38°41'09" 54.66
C10 150.00 20°52'40" 28.31
C11 275.00 05°53'56" 39.91
C12 500.00 04°34'24" 57.73
C13 295.00 12°05'00" 82.21
C14 480.00 11°09'24" 93.47

LINE TABULATION
NO. BEARING LENGTH DIST.
L1 N88°03'44"E 79.07
L2 S73°07'44"E 114.16
L3 S48°21'24"E 255.72
L4 S44°12'02"E 200.49
L5 S32°25'50"E 121.96
L6 S38°28'00"E 142.84
L7 S27°40'58"E 80.97
L8 S08°55'04"W 83.18
L9 S08°15'55"E 128.44
L10 N75°15'55"E 108.63
L11 S77°20'00"E 115.07
L12 S75°15'55"W 115.07

FOUND 2-1/2" DISC
T.14 N. R.11 E
T.13 N. R.11 E

FOUND 2-1/2" DISC
T.14 N. R.11 E
T.13 N. R.11 E

FOUND 2-1/2" DISC
T.14 N. R.11 E
T.13 N. R.11 E

FOUND 2-1/2" DISC
T.14 N. R.11 E
T.13 N. R.11 E

FOUND 2-1/2" DISC
T.14 N. R.11 E
T.13 N. R.11 E

FOUND 2-1/2" DISC
T.14 N. R.11 E
T.13 N. R.11 E

FOUND 2-1/2" DISC
T.14 N. R.11 E
T.13 N. R.11 E

FOUND 2-1/2" DISC
T.14 N. R.11 E
T.13 N. R.11 E

FOUND 2-1/2" DISC
T.14 N. R.11 E
T.13 N. R.11 E

FOUND 2-1/2" DISC
T.14 N. R.11 E
T.13 N. R.11 E

FOUND 2-1/2" DISC
T.14 N. R.11 E
T.13 N. R.11 E